



BLOOMING DREAMS

ANNE-CATHERINE KENIS

FEATURING THE FLORAL CREATIONS OF THIERRY BOUTEMY

EXHIBITION: APRIL 22 — MAY 16, 2026

OPENING RECEPTION: WED, APRIL 22, 5 PM — 9 PM

The Brussels gallery Habitation 62 welcomes the exhibition "Blooming Dreams," a poetic encounter where the ceramic creations of Anne-Catherine Kenis engage in a dialogue with the floral world of Thierry Boutemy. In this sensory celebration, textures, colors, and fragrances intertwine in a true ode to Nature and dreams.

HABITATION 62
35 RUE FERNAND NEURAY
1050 BRUSSELS

OPEN WEDNESDAY
TO SATURDAY, 12 PM — 6 PM,
AND BY APPOINTMENT

PRESS CONTACT:
ALEXIS VANHOVE
+32 476 54 73 49
CONTACT@HABITATION62.COM

WWW.HABITATION62.COM
@HABITATION_62



I



Small, colorful forms emerge from a delicate setting. The sculptures of Anne-Catherine Kenis appear to belong to a discreet world steeped in reverie. Her work is rooted in an ancient Asian tradition; in China, Japan, and Korea, scholars introduced stones, wood, or coral into their private spaces—fragments of nature intended to nourish meditation and the imagination.

This contemplative relationship with matter echoes her own professional journey. For over forty years, her career as a ceramic restorer led her to observe and repair fragile objects with patience and meticulousness. Now liberated from the constraints of that practice, the artist explores abstract forms, bold colors, and unexpected assemblages.

Behind the vibrancy of the colors lies a patient study of chromatic harmonies. Touches applied directly to the clay compose subtle chords revealed by the “chemistry” of the glaze firing.

Anne-Catherine Kenis readily describes herself as a miniaturist; being nearsighted, she has turned this trait into an asset, allowing her to perceive the slightest reliefs. Her sculptures, though often small in scale, seem to contain entire landscapes, as if the infinitely small possessed the power to broaden the gaze. In this silent universe, the works only fully reveal themselves to those who take the time to draw near. The singular strength of her work resides in this very attention to detail.



On the occasion of "Blooming Dreams," a sensitive dialogue is established between the permanence of terracotta and the fleeting poetry of floral compositions. Thierry Boutemy, a virtuoso of the botanical world, inhabits Anne-Catherine Kenis's works with delicacy, applying an instinctive, almost pictorial gesture. The two creative universes merge in a vibrant and flamboyant impulse.

Habitation 62 curation highlights two types of objects. On the one hand, sculptures, among which the fascinating *Dream Stones* stand out: each tells, in its own way, a marvelous story, filled with gathered treasures and mineral reveries. On the other hand, there are vases, which naturally invite the creation of a unique narrative through a bouquet or an ephemeral floral arrangement.

Presented within Habitation 62, a gallery specializing in 20th-century design, Kenis's ceramics and Boutemy's floral compositions resonate with a selection of furniture specially chosen to host them, forming an ensemble of rare aesthetic intensity.

ANNE-CATHERINE KENIS

Born in Belgium, she descends from a lineage of Dutch painters through her artist mother, while her father was a medical researcher. Trained in ceramic sculpture at the École nationale supérieure des arts visuels de La Cambre, she also developed a passion for ancient civilizations. A trip to Africa at age 19 decisively oriented her path: she became a restorer of "Tribal Arts". A specialist in archaeological terracotta, carved stone, painted vases, stucco, and archaic bronzes, she is now internationally recognized in her field. Parallel to this, she continues her work as a visual artist in engraving, sculpture, and ceramics. She has exhibited her work in Paris and Brussels, notably during "Parfaire le monde" at Studio 18 in a duo with Sophie Whettnall. "Blooming Dreams" is her first solo exhibition.



© Stefan Liberski

THIERRY BOUTEMY

Since the late 1990s, he has celebrated flowers through the seasons in his Brussels boutiques, driven by a taste for the natural and a demand for quality that defines each of his compositions. In 2006, his floral sets for Sofia Coppola's film *Marie-Antoinette* brought him global acclaim. From Paris to New York, London to Beirut, he now brings his floral artistry to all corners of the world. Today, he cultivates the art of sharing at the crossroads of nature and creation, turning the bouquet into a sensitive and timeless celebration.

HABITATION 62

Both trained in art history and fueled by a shared passion for design and architecture, Alexis Vanhove and Morgane Teheux founded Habitation 62 in 2020. Shortly before, they acquired the personal home of Belgian designer and interior architect Christophe Gevers, which served as the ideal setting to present their carefully curated collection of 20th-century objects and furniture, initially on Instagram and later via their website. In early 2025, the duo opened a new chapter by moving into a space within a late 19th-century building in Ixelles, located in the elegant Place Brugmann district. From the 1930s to the 2000s, and sourced from Scandinavia, Switzerland, or the Netherlands, each piece is chosen with rigor, passion, and conviction. Eager to expand their horizons and share their love of beauty in all its forms, the two gallerists inaugurate their first exhibition dedicated to a contemporary artist with "Blooming Dreams".

EXHIBITION: APRIL 22 - MAY 16, 2026

OPENING RECEPTION: WED, APRIL 22, 5 PM - 9 PM

PHOTOGRAPHY © EEFJE DE CONINCK
ET SENNE VAN DER VEN

HABITATION 62

35 RUE FERNAND NEURAY — 1050 BRUSSELS

OPEN WEDNESDAY TO SATURDAY, 12 PM — 6 PM,
AND BY APPOINTMENTPRESS CONTACT:
ALEXIS VANHOVE
+32 476 54 73 49
CONTACT@HABITATION62.COMWWW.HABITATION62.COM
@HABITATION_62













STONEWARE, GLAZES,
MULTIPLE FIRINGS
HEIGHT 13,5 CM,
DIAM. APPROX. 16 CM



STONEWARE, GLAZES, ANTIQUE
MURANO GLASS, MULTIPLE FIRINGS
APPROX. 30 x 32 x 24 CM



STONEWARE, GLAZES, POM-POMS,
MULTIPLE FIRINGS
APPROX. 35 x 26 x 30 CM



STONEWARE, GLAZES
HEIGHT 25 CM,
DIAM. APPROX. 31 CM



STONEWARE, PORCELAIN, GLAZES,
MULTIPLE FIRINGS
HEIGHT 48 CM,
DIAM. APPROX. 40 CM



STONEWARE, GLAZES ON SLIPS,
PORCELAIN BLOCKS, EGYPTIAN
PASTE, MULTIPLE FIRINGS
APPROX. 27 x 24 x 20 CM



STONEWARE, GLAZES,
EGYPTIAN PASTE, SPONGES,
PORCELAIN BLOCKS
APPROX. 21 x 19 x 10 CM



STONEWARE, GLAZES, STONE,
MULTIPLE FIRINGS
HEIGHT 12 CM,
DIAM. APPROX. 17 CM



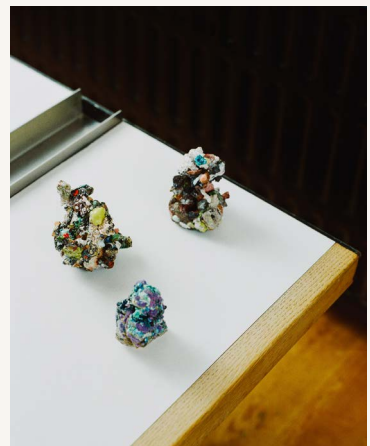
STONEWARE, GLAZES, STONE
HEIGHT 19,5 CM,
DIAM. APPROX. 27 CM



STONEWARE, GLAZES, ANTIQUE
MURANO GLASS, QUICKLIME,
MULTIPLE FIRINGS
APPROX. 19 x 18 x 16 CM



STONEWARE, GLAZES, PORCELAIN
BLOCKS, MULTIPLE FIRINGS
APPROX. 33 x 20 x 23 CM



STONEWARE, GLAZES, STONE,
PORCELAIN, MULTIPLE FIRINGS
APPROX. 9 x 10 x 10 CM
APPROX. 10 x 10 x 8 CM
APPROX. 7,5 x 6 x 6 CM